



📍 1a Eden Grove, Whitley, Whitley, Wiltshire, SN12 8QJ

🏠 Guide Price £300,000

We are delighted to bring to the market this Brand New 2 Bedroom Detached Bungalow located in the sought-after village location of Whitley on the outskirts of Corsham.

- Brand New Built 2 Bedroom Detached Bungalow
- Sought After Village Location
- Gas Central Heating
- Mains Services
- 2 Double Bedrooms
- Open Plan Style Living Accommodation
- Fully Double Glazed
- Hard Standing For 2 Cars
- Fully Enclosed Low Maintenance Garden
- 10 Year Architect Certificate

🏡 Freehold

🏠 EPC Rating



We are delighted to bring to the market this Brand New 2 Bedroom Detached Bungalow located in the sought-after village location of Whitley on the outskirts of Corsham. The property has been designed and built in a contemporary open plan design having the added benefits of both solar panels and mains gas central heating being a very efficient property to own. The property which is near to finishing comprises a large open plan living dining room with a newly installed fitted kitchen along with 2 double bedrooms and a shower room. The bungalow offers a fully enclosed low-maintenance garden with open aspects to the side and rear along with graveled parking to the front for two cars. The property will be sold with a 10-year architect certificate and is offered with No onward Chain.

Situation

Situated in the heart of the very popular and friendly village of Whitley with all its local amenities in easy walking distance; primary school, pre-school nurseries, golf and cricket clubs, playing field, village hall and numerous community groups, including a planned community shop, bike shop and cafe. Another bonus for the village is having its own country pub - the highly rated Pear Tree and restaurant with its great food and surroundings. A little further is Lowden Garden Centre, farm shop and restaurant. There are numerous supermarkets within two miles, including Waitrose, Sainsburys and Lidl. A short drive to the historic and lovely market towns of Bradford on Avon, Corsham and Lacock, with the beautiful Georgian city of Bath not far away. Nearby bus stop and excellent transport links both by high-speed rail to London and easy road access to A4 and to the M4 motorway.

Property Information

Brand New Build

Mains Services

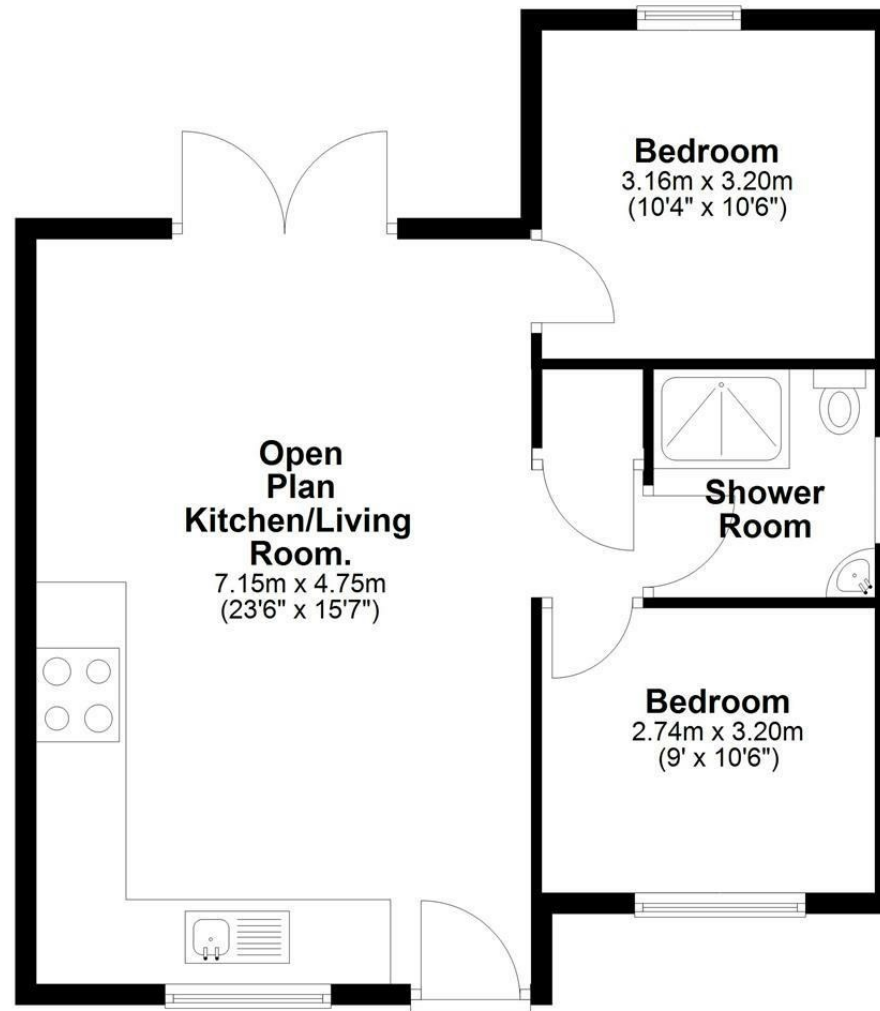
Gas Central Heating

Council Tax Band: T.B.C

E.P.C Rating: A



Ground Floor



Disclaimer: These particulars, whilst believed to be accurate are set out as a general outline only for guidance and do not constitute any part of an offer or contract. Intending purchasers should not rely on them as statements of representation of fact, but must satisfy themselves by inspection or otherwise as to their accuracy. No person in this firm's employment has the authority to make or give any representation or warranty in respect of the property. All measurements and distances are approximate only. Your home is at risk if you do not keep up repayments on a mortgage or other loan secured on it.